

12-1079



DYNASTY®

**TRUE
FRONT
ACCESS
HIGH RATE MAX
UPS 12-355MRF**



**Valve Regulated Lead Acid (VRLA) Battery Series
Designed for UPS Standby Power Applications**

FEATURES & BENEFITS

APPLICATIONS

- Data Centers
- Network Operations Centers
- Industrial Process Control Facilities
- Internet Housing Sites
- Semiconductor Manufacturing
- Banks & Financial Markets
- Power Generation Plants
- Hospitals & Testing Laboratories
- Emergency 911 Response Centers

- True Front Access threaded copper alloy inserts for reduced maintenance and increased safety
- Terminal versatility - ease of diagnostic readings with C&D Ohmic Ring®
- Innovative front terminal design maximizing energy density with direct connect extrusion fusion weld technology
- Reduced headspace driving higher energy density, in cabinet or rack applications
- Removable handles for ease of installation
- Thermally welded case-to-cover bond to ensure a leak-proof seal
- Flame-retardant polypropylene case and cover compliant with UL94 V-0 with an Oxygen Limiting Index of greater than 28
- Absorbent Glass Mat (AGM) technology for efficient gas recombination of over 99%
- Optional True Front Access gas collection system
- Multicell design for ease of installation and maintenance
- UL-recognized component
- Compliant to major global specifications
 - UL1778, 924, 1989
 - BS 6290-4
 - IEC 896-2
 - UL94 V-0
- Not restricted for air transport - Complies with IATA/ICAO Special Provision A67
- Not restricted for surface transport - classified as non-hazardous material as related to DOT-CFR Title 49 parts 171-189
- Not restricted for water transport - classified as non-hazardous material per Amendment 27
- 3 Year Full Warranty (refer to Dynasty warranty card, 41-9027)

SPECIFICATIONS

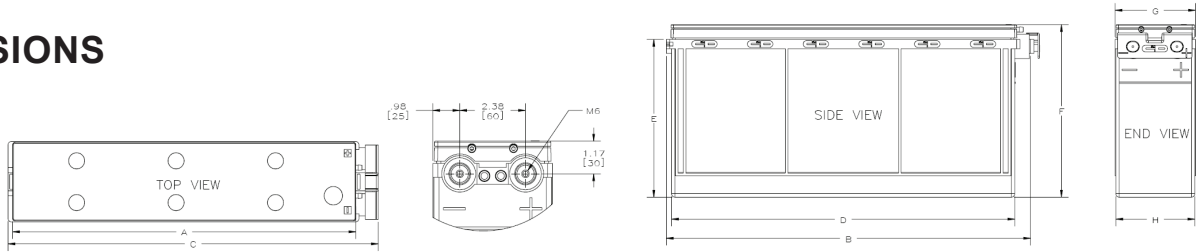
Constant Power Discharge Ratings - Watts per cell @ 77°F (25°C)											
Model Number	Voltage Per Unit	20 hour Rate @ 77°F (25°C) to 1.75	Operating time (in minutes) to 1.67 volts per cell								
			5	10	15	20	30	40	50	60	90
UPS12-355MRF	12 V	108 Ah	591.3	440.8	358.4	299.7	229.4	190.5	164.9	146.6	105.6

*Nominal 20 hr rate to 1.75 VPC in Ampere-Hours

SPECIFICATIONS

Model	Cells Per Unit	Battery Weight		Maximum Terminal Discharge Current Rating (AMPS)	Ohms Impedance 60 HZ (Ω)
		lbs	kg		
UPS12-355MRF	6	80	36	800	0.0030

DIMENSIONS



Model	A		B		C		D		E		F		G		H	
	in	mm	in	mm	in	mm	in	mm	in	mm	in	mm	in	mm	in	mm
UPS12-355MRF	18.5	469	19.5	496	20.1	511	18.5	470	8.5	216	9.3	235	4.3	110	4.2	107

*All dimensions in inches and (millimeters). All dimensions are for reference only. Contact a C&D representative for complete dimensional information.

Operating Temperature Range with temperature compensation	Discharge: -40°F (-40°C) to +160°F (71°C) Charge: -10°F (-23°C) to +140°F (60°C)
Nominal Operating Temperature Range	+68°F (20°C) to +80°F (27°C)
Recommended Maximum Charging Current	C/5 amperes @ 20 Hr rate
Float Charging Voltage	13.5 to 13.8 VDC average per 12V unit
Maximum AC Ripple Charger	0.5% RMS or 1.5% P-P of float charge voltage recommended for best results. Max voltage allowed = 1.4% RMS (4% P-P) Max current allowed = C/20
Self Discharge	Battery can be stored up to 6 months at 77°F (25°C) before a freshening charge is required. Batteries stored at temperatures greater than 77°F (25°C) will require recharge sooner than batteries stored at lower temperatures. See C&D brochure 41-7272, Self-Discharge and Inventory Control for details.
Equalize charge and cycle service voltage	14.40 to 14.80 VDC average per 12V unit @ 77°F (25°C)
Terminal: Inserted - Inter-unit connector provided	Threaded copper alloy insert terminal to accept M6 bolt
Terminal Hardware Initial Torque	110 in.-lbs. (12.4 N-m)

UPS 12-355MRF

Constant Power Discharge Ratings - Watts Per Cell @ 77°F (25°C)										
Operating Time to End Point Voltage (in minutes)										
End Point Volts/Cell	5	10	15	20	30	40	45	50	60	90
1.75	543.9	411.8	334.9	283.3	220.6	183.8	170.6	159.6	142.2	103.1
1.70	578.3	431.1	350.5	294.0	226.0	188.0	174.4	163.0	145.1	104.7
1.67	591.3	440.8	358.4	299.7	229.4	190.5	176.6	164.9	146.6	105.6
1.65	600.6	447.7	364.0	303.7	231.7	192.5	178.5	166.8	148.3	106.5

Note: Specifications subject to change without notification. Above ratings do not include interunit connector voltage drops

C&D TECHNOLOGIES, INC.

1400 Union Meeting Road
P.O. Box 3053 • Blue Bell, PA 19422-0858
(215) 619-2700 • Fax (215) 619-7899 • (800) 543-8630
customersvc@cdtechno.com
www.cdtechno.com

Any data, descriptions or specifications presented herein are subject to revision by C&D Technologies, Inc. without notice. While such information is believed to be accurate as indicated herein, C&D Technologies, Inc. makes no warranty and hereby disclaims all warranties, express or implied, with regard to the accuracy or completeness of such information. Further, because the product(s) featured herein may be used under conditions beyond its control, C&D Technologies, Inc. hereby disclaims all warranties, either express or implied, concerning the fitness or suitability of such product(s) for any particular use or in any specific application or arising from any course of dealing or usage of trade. The user is solely responsible for determining the suitability of the product(s) featured herein for user's intended purpose and in user's specific application.